

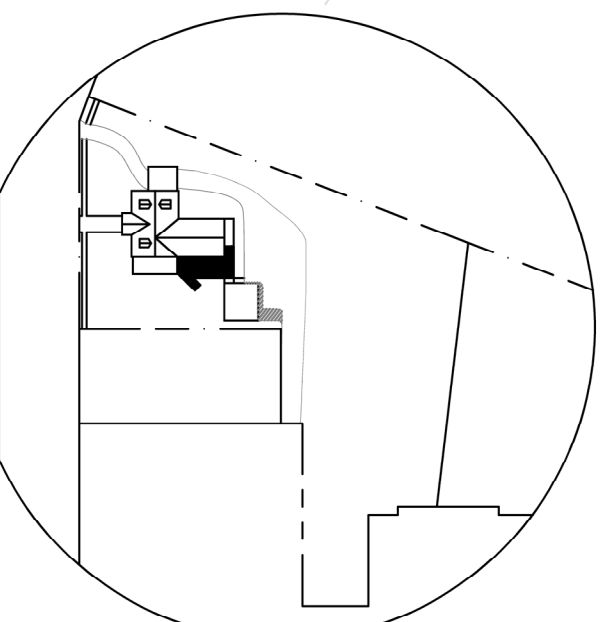


**BENTLEY SPACE MODIFICATIONS**

- Bentley space modifications CNU 066-L
- Relocation of grab and go area to the upper floor.
- Construction - May 19 to Aug 1, 2025
- No pedestrian or vehicular impact
- Connector parking will be located behind Bentley or in the loading dock.

**SAITO HALL WATER HEATER REPLACEMENT**

- Construction - May 19 to July 18, 2025
- Replace water heaters with instantaneous water heaters
- Connector parking will be on the rooftop end of Saito Hall
- No pedestrian or vehicular impact



**LOCK HAVEN MAIN CAMPUS**  
**CONSTRUCTION ACTIVITY - 2025**  
 PLANNING AND CONSTRUCTION OFFICE  
 DATE: 11/15/2024